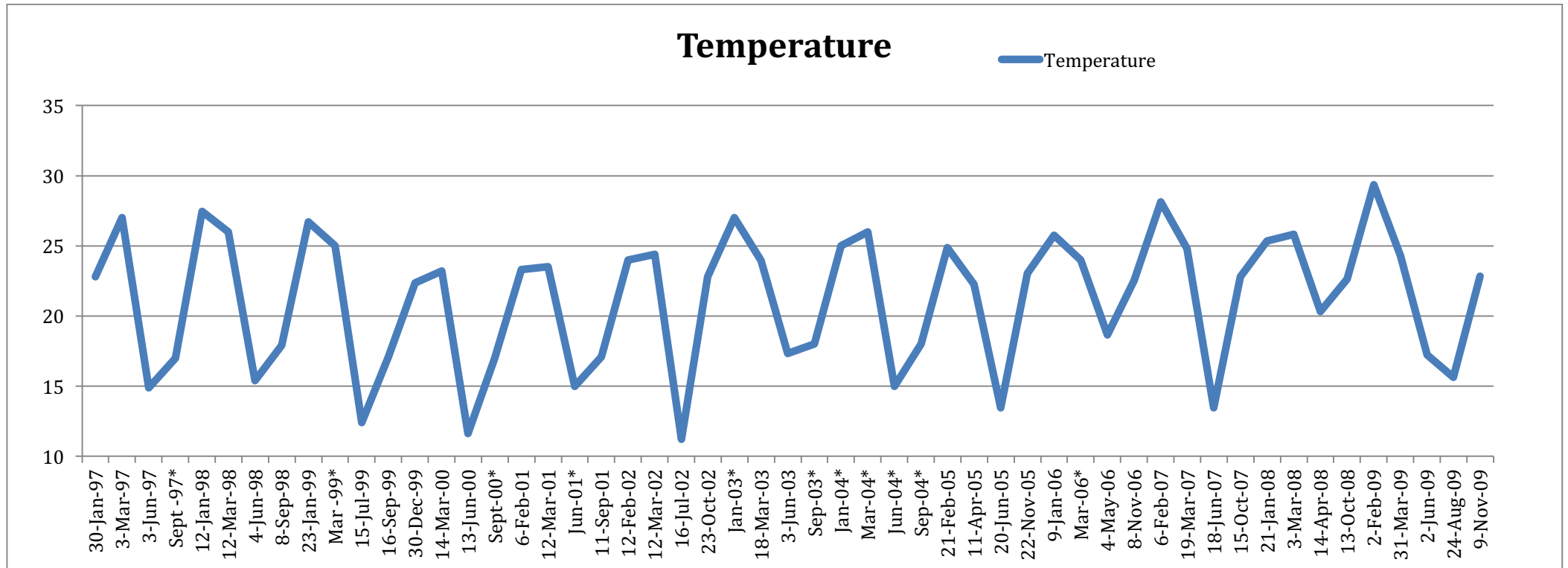


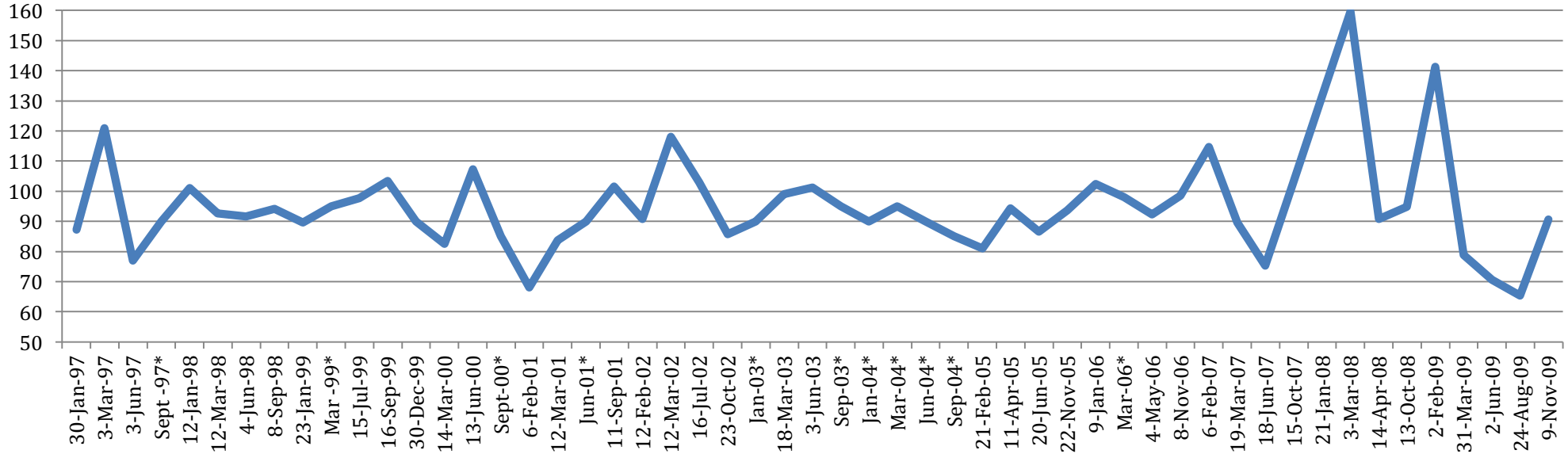
Water Quality measures – Temperature, Dissolved Oxygen, Turbidity, Conductivity and pH.

Final Detention Basin 1997 to 2009



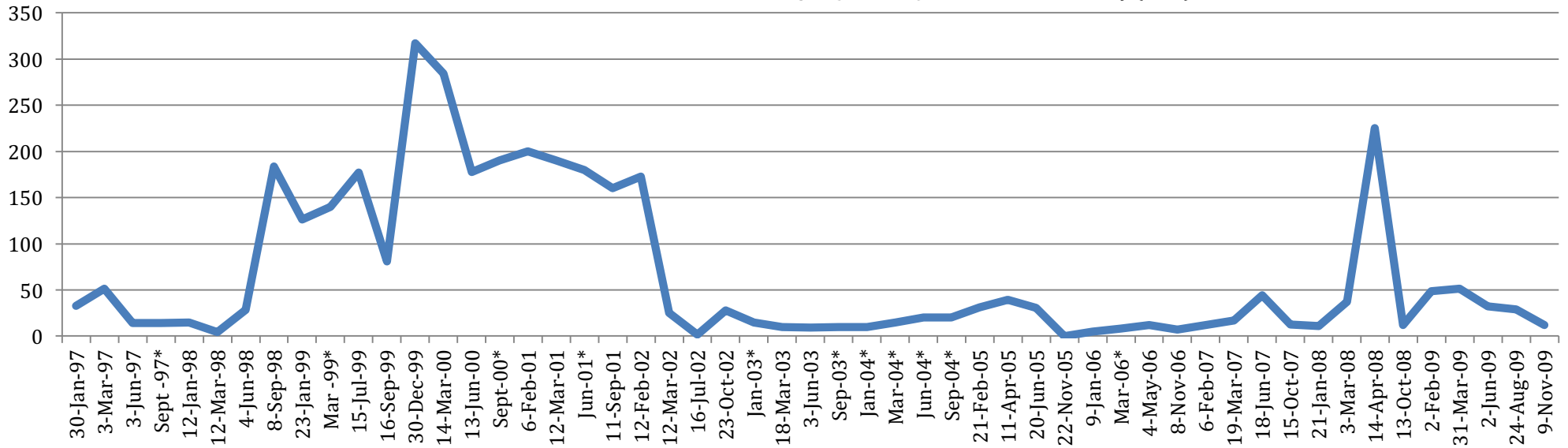
Dissolved Oxygen (% saturation)

— Dissolved Oxygen (% saturation)



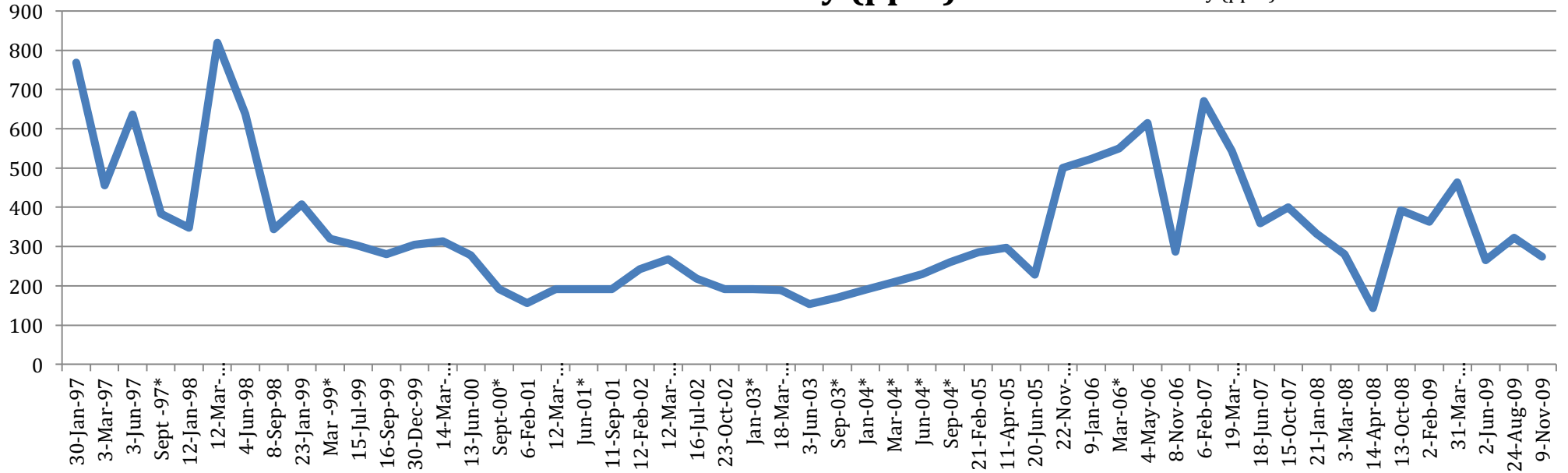
Turbidity (NTU)

— Turbidity (NTU)



Conductivity (ppm)

Conductivity (ppm)



pH

pH

