

EARTH AND ENVIRONMENTAL SCIENCE

The Local Environment

Lots of first hand data collection of rock types, soil characteristics and local vegetation. Human impacts over the last 50 years and relevant laws and controls are also investigated.

Introduced Species

A canoe trip in the Yarramundi Lagoon (12 max.) is often included in this program. Several introduced species and their impacts on the lagoon/river and the lakes are examined, with a focus on Mosquito fish (*Gambusia*) and *Salvinia*.



HOW TO BOOK:

A booking may be made on the website, via email or phone. Bookings should be made well in advance to avoid disappointment. Please consider your transport needs when booking numbers - we are happy to discuss these with you, along with times needed for the program.

Email: penritlakes-e@det.nsw.edu.au or pleec98@gmail.com

Phone: 02 4730 3630

Website: www.penritlakeseec.com

Costs: The use of the centre is FREE to DEC and Catholic systemic schools. Small charges may apply for the use of other facilities and equipment where appropriate. These will vary according to the requirements of the visiting group and transport arrangements.

Penrith Lakes Environmental Education Centre
Located inside the
Sydney International Regatta Centre

153-233 Old Castlereagh Road
Cranebrook NSW 2749
T: 02 4730 3630 F: 02 4730 3662
penritlake-e.school@det.nsw.edu.au
www.penritlakeseec.com



Education & Communities



SCIENCE STAGE 4-6



OUR REGULAR STAGE

Penrith Lakes EEC has been presenting quality Science excursions for over 20 years.

Our website has all the information you need to plan your excursion, including worksheets, risk assessments and program/excursion overviews with syllabus outcomes addressed.

See www.penrithlakeseec.com

We are also happy to discuss with you anything else you might need to plan your excursion with us.

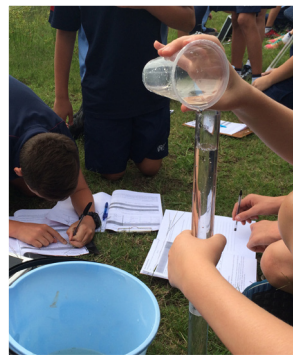
SCIENCE AT PENRITH LAKES

The following programs are based on the NSW Education Standards Authority Science Syllabuses Stage 4-6.

STAGE 4 PROGRAM

Living Lakes - Freshwater Aquatic Ecosystem

This unique and highly engaging program allows students to perform a first-hand investigation of a freshwater ecosystem using various scientific equipment and data collection methods. Plant and animal identification, food chains and webs, and ecosystem interactions are all analysed in a 'hands on' activity packed day.

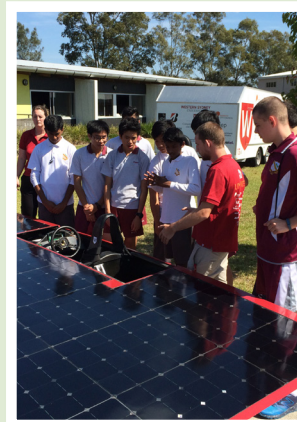


4-6 PROGRAMS

PROGRAMS STAGE 5

Cross Curricular Sustainability Excursion

A 'one of a kind' quality program that addresses Science and Geography syllabus outcomes, as well as 'Sustainability' and 'Aboriginal and Torres Strait Islander Histories and Cultures' cross curricular priorities. Through a series of interactive 40 minute workshops such as 'WSU Solar Car' and 'Green Buildings Tour', students will learn about various aspects of sustainability that will empower them to enact positive change for the environment.



SENIOR SCIENCE PROGRAMS

The Local Environment

This program is often a mirror of the Biology study above and allows schools to combine classes for this fieldwork exercise. Students can also look at human impacts on the ecosystems.



PROGRAMS STAGE 6

A Local Ecosystem

This highly regarded (freshwater aquatic ecosystem) fieldwork program books out early each year. Students collect first hand data on a range of abiotic factors, identify various plants and invertebrates and complete a full transect at the study site. Adaptations, biotic and abiotic relationships and food webs are analysed in a day that is "all go".